

Application and verification of ECMWF products 2013

Estonian Environmental Agency – Andres Luhamaa

1. Summary of major highlights

ECMWF products are reliable and valuable source of information and are used for almost all aspects of weather forecasting. ECMWF products are used in meteorological workstations for duty forecasters (Messir Vision, Smartmet) and are available on internal web pages as browsable images. Forecaster also use ECMWF web pages (ecchart) for ensemble products .

2. Use and application of products

2.1 Post-processing of model output

2.1.1 Statistical adaptation

2.1.2 Physical adaptation

ECMWF is used as source of boundaries for local NWP model HIRLAM

2.1.3 Derived fields

2.2 Use of products

Extreme weather index from ECMWF internal pages is used.

3. Verification of products

3.1 Objective verification

3.1.1 Direct ECMWF model output (both deterministic and EPS)

3.1.2 ECMWF model output compared to other NWP models

We have internal web pages for comparing ECMWF forecast, local HIRLAM forecast and official forecast. Figure 1 illustrates basic functionality: day by day statistics of temperature forecast for 24h, 36h, ... forecasts. Numeric results are represented in monthly tables, where it is easy to find problematic forecasts.

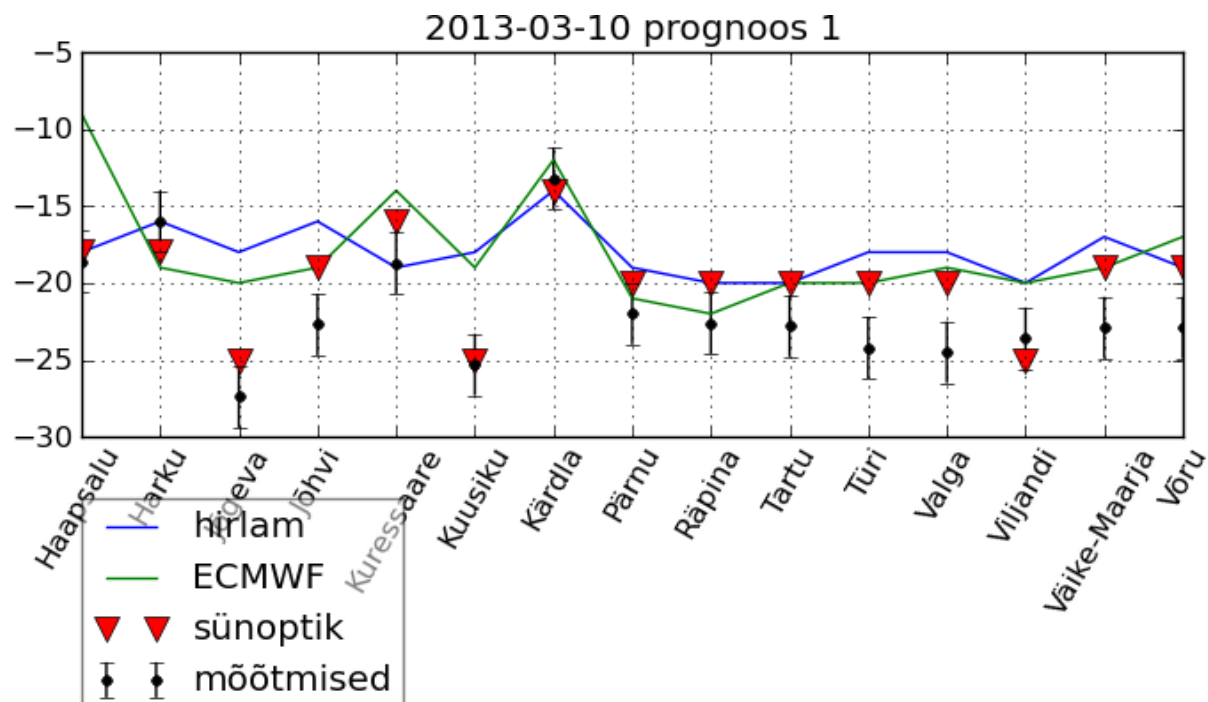


Figure 1 Representation of verification of a single forecast for a single point

3.1.3 Post-processed products

3.1.4 End products delivered to users

3.2 Subjective verification

3.2.1 Subjective scores (including evaluation of confidence indices when available)

3.2.2 Synoptic studies

We have not collected subjective verification data this year.

4. References to relevant publications