



European Research Council

Established by the European Commission

Supporting top researchers
from anywhere in the world

A finite-volume module for cloud-resolving simulations of global atmospheric flows

Piotr Smolarkiewicz, Christian Kühnlein, Wojciech Grabowski (NCAR)

FVM extended to moist dynamics (with focus on coupling) → synthesis of “dry” *FVM* [Piotr Smolarkiewicz, Willem Deconinck, Mats Hamrud, George Mozdzynski, Christian Kühnlein, Joanna Szmelter, Nils Wedi (*JCP*, 2016)] and “moist” schemes advanced in [Wojciech Grabowski & Piotr Smolarkiewicz (*MWR*, 1990, 1996, 2002)]

European Centre for Medium Range Weather Forecasts

smolar@ecmwf.int



Governing (compressible Euler) equations, a physically intuitive form:

$$\frac{d\rho}{dt} = -\rho \nabla \cdot \mathbf{u} = 0 ,$$

$$\frac{d\mathbf{u}}{dt} = -\frac{\theta(1 + q_v/\epsilon)}{\theta_0(1 + q_t)} \nabla \varphi - \frac{\mathbf{g}}{\theta_a} \left(\theta' + \theta_a (\epsilon q'_v - q_c - q_p) \right) + \mathbf{D} ,$$

$$\frac{d\theta'}{dt} = -\mathbf{u} \cdot \nabla \theta_a + \frac{L\theta}{c_p T} (C_d + E_p) + \mathcal{H} ,$$

$$\frac{dq_v}{dt} = -C_d - E_p + D^{q_v} ,$$

$$\frac{dq_c}{dt} = C_d - A_p - C_p + D^{q_c} ,$$

$$\frac{dq_p}{dt} = A_p + C_p + E_p + D^{q_p} - \frac{1}{\rho} \nabla \cdot (\rho \mathbf{u} \downarrow q_p) .$$

$$\varphi = c_p \theta_0 \left[\left(\frac{R_d}{p_0} \rho \theta (1 + q_v/\epsilon) \right)^{R_d/c_v} - \pi_a \right] \rightarrow$$

$$\frac{d\varphi}{dt} = \xi \phi \nabla \cdot \mathbf{u} - \mathbf{u} \cdot \nabla \phi_a + \xi \phi \left(\frac{\mathcal{R}^\theta}{\theta} + \frac{\mathcal{R}^{q_v/\epsilon}}{1 + q_v/\epsilon} \right)$$

$$\mathcal{R}^\theta \equiv \text{RHS}(1c) + \mathbf{u} \cdot \nabla \theta_a$$

notes:

$$\left[\begin{array}{l} q_t := q_v + q_c + q_p \rightarrow \frac{dq_t}{dt} = -\frac{1}{\rho} \nabla \cdot (\rho \mathbf{u} \downarrow q_p) + D^{q_t} \\ q_l := q_c + q_p \rightarrow \frac{dq_l}{dt} = (C_d + E_p) - \frac{1}{\rho} \nabla \cdot (\rho \mathbf{u} \downarrow q_p) + D^{q_l} \\ q_t \equiv 0 \rightarrow q_v = q_c = q_p \equiv 0 \quad \text{recovers dry dynamics} \end{array} \right]$$

$$\left[\begin{array}{l} \frac{\theta(1 + q_v/\epsilon)}{\theta_0(1 + q_t)} = \frac{\theta_e}{\theta_0} := \Theta_e \rightarrow \mathbf{g}(1 - \theta_e/\theta_{ea}) \approx \frac{\mathbf{g}}{\theta_a} (\theta' + \theta_a(\epsilon q'_v - q_c - q_p)) \\ \frac{\theta}{\theta_{ea}} \approx \frac{\theta}{\theta_a} \implies \theta' = \theta - \theta_a \quad \text{while} \quad q'_v = q_v - \frac{\theta}{\theta_a} q_{va} \\ \left[0 = -c_p \theta_{ea} \tilde{\mathbf{G}} \nabla \pi_a - \mathbf{g} - \mathbf{f} \times \mathbf{u}_a + \mathcal{M}(\mathbf{u}_a) \right] \end{array} \right]$$

$$\left[\begin{array}{l} q_c > 0 \implies q_v = q_{vs} \\ q_v < q_{vs} \implies q_c = 0 \end{array} \quad q_{vs} = \frac{\epsilon e_s}{p - e_s} \quad e_s(T) = e_o \exp \left[\frac{L}{R_v} \left(\frac{1}{T_o} - \frac{1}{T} \right) \right] \right]$$

Governing equations, actually solved conservation form:

$$\frac{\partial \mathcal{G}_\rho}{\partial t} + \nabla \cdot (\mathcal{G}_\rho \mathbf{v}) = 0 ,$$

$$\frac{\partial \mathcal{G}_\rho \mathbf{u}}{\partial t} + \nabla \cdot (\mathcal{G}_\rho \mathbf{v} \otimes \mathbf{u}) = \mathcal{G}_\rho \left(-\Theta_\rho \tilde{\mathbf{G}} \nabla \varphi - \frac{\mathbf{g}}{\theta_a} (\theta' + \theta_a (\varepsilon q'_v - q_c - q_p)) - \mathbf{f} \times \mathbf{u}' + \mathcal{M}' + \mathcal{D} \right) ,$$

$$\frac{\partial \mathcal{G}_\rho \theta'}{\partial t} + \nabla \cdot (\mathcal{G}_\rho \mathbf{v} \theta') = \mathcal{G}_\rho \left(-\tilde{\mathbf{G}}^T \mathbf{u} \cdot \nabla \theta_a + \frac{L\theta}{c_p T} (C_d + E_p) + \mathcal{H} \right) ,$$

$$\frac{\partial \mathcal{G}_\rho q_{\dots}}{\partial t} + \nabla \cdot (\mathcal{G}_\rho \mathbf{v} q_{\dots}) = \mathcal{G}_\rho (\mathcal{R}^{q_{\dots}}) .$$

bulk microphysics

$$\frac{\partial \mathcal{G}_\rho \varphi}{\partial t} + \nabla \cdot (\mathcal{G}_\rho \mathbf{v} \varphi) = \mathcal{G}_\rho \mathcal{R}^\varphi$$

$$\mathcal{R}^\varphi = -\xi \phi \frac{1}{\mathcal{G}} \nabla \cdot (\mathcal{G} \mathbf{v}) - \frac{1}{\mathcal{G}_\rho} \nabla \cdot (\mathcal{G}_\rho \mathbf{v} \phi_a) + \phi_a \frac{1}{\mathcal{G}_\rho} \nabla \cdot (\mathcal{G}_\rho \mathbf{v}) + \xi \phi \Pi$$

$$\Pi \equiv \left(\frac{\mathcal{R}^\theta}{\theta} + \frac{\mathcal{R}^{q_v/\epsilon}}{1 + q_v/\epsilon} \right)$$

*conservativeness, relative simplicity ,
Eulerian/Lagrangian congruence*

$$\frac{d\Phi}{dt} = \mathbf{R} \equiv \mathbf{R}_c + \mathbf{R}_p$$

$$\Phi = \begin{bmatrix} \theta \\ q_v \\ q_c \\ q_p \end{bmatrix}; \quad \mathbf{R}_c = \begin{bmatrix} \frac{L\theta}{c_p T} C_d \\ -C_d \\ C_d \\ 0 \end{bmatrix}; \quad \mathbf{R}_p = \begin{bmatrix} \frac{L\theta}{c_p T} E_p \\ -E_p \\ -A_p - C_p \\ A_p + C_p + E_p + F_p \end{bmatrix}$$

$$F_p := -\frac{1}{\varrho} \nabla \cdot (\varrho \mathbf{u}_\downarrow q_p)$$

$$\Phi(\mathbf{x}, t) = \Phi(\mathbf{x}_o, t_o) + \int_{\mathcal{T}} (\mathbf{R}_c + \mathbf{R}_p) d\tau \quad \rightarrow \quad \Phi^{n+1} = \left(\Phi + 0.5\delta t \mathbf{R}_c \right)_o + 0.5\delta t \mathbf{R}_c^{n+1} + \delta t \langle \mathbf{R}_p \rangle_n^{n+1}$$

e.g. $(A_p + C_p)^{n+1} = -\mathcal{R}_p^{q_c}|^{n+1}$ **and** $E_p^{n+1} = -\mathcal{R}_p^{q_v}|^{n+1} \rightarrow \mathcal{O}(\delta t)$ estimate

$$\tilde{q}_p^{n+1} = (q_p + \delta t R^{q_p})_o - \delta t (\widetilde{\mathcal{R}}_p^{q_c} + \widetilde{\mathcal{R}}_p^{q_v})^{n+1}$$

$$(q_c + \delta t R^{q_c})_o + \delta t \mathcal{R}_p^{q_c}|^{n+1} \geq 0 \implies$$

$$-\widetilde{\mathcal{R}}_p^{q_c}|^{n+1} = \min \left(\mathcal{R}_p^{q_c}|^{n+1}, (\delta t^{-1} q_c + R^{q_c})_o \right),$$

$$(q_p + \delta t R^{q_p})_o - \delta t (\widetilde{\mathcal{R}}_p^{q_c}|^{n+1} + \mathcal{R}_p^{q_v}|^{n+1}) \geq 0 \implies$$

$$-\widetilde{\mathcal{R}}_p^{q_v}|^{n+1} = \max \left(\mathcal{R}_p^{q_v}|^{n+1}, -(\delta t^{-1} q_p + R^{q_p})_o + \widetilde{\mathcal{R}}_p^{q_c}|^{n+1} \right)$$

furthermore, given the operator $\mathcal{L}(\psi, \mathbf{v}, \varrho^*, \delta\tau) := \psi - \frac{\delta\tau}{\varrho^*} \nabla \cdot (\varrho^* \mathbf{v} \psi)$

$$\tilde{q}_p = \mathcal{L}(\tilde{q}_p^{n+1}, \tilde{\mathbf{G}}^T \mathbf{u}^\downarrow|^{n+1}, (\mathcal{G}\varrho)^{n+1}, \delta t)$$

$$\widetilde{R}_p^{q_p}|^{n+1} = (\widetilde{\mathcal{R}}_p^{q_c} + \widetilde{\mathcal{R}}_p^{q_v})^{n+1} + (\tilde{q}_p - \tilde{q}_p^{n+1})/\delta t$$

completed all explicit integrals \rightarrow the implicit integrals follow

$$q_v^{n+1} = \widehat{\widehat{q}}_v - \Delta q_c = q_{vs} \left(\widehat{\widehat{\theta}} + \Lambda^* \Delta q_c, \Lambda^* \right), \quad \text{if } (\widehat{\widehat{q}}_c + \Delta q_c) > 0$$

$$q_c^{n+1} = \widehat{\widehat{q}}_c + \Delta q_c = 0, \quad \text{if } (\widehat{\widehat{q}}_v - \Delta q_c) < q_{vs} \left(\widehat{\widehat{\theta}} + \Lambda^* \Delta q_c, \Lambda^* \right)$$

saturation condition: $\Delta q_c = \widehat{\widehat{q}}_v - q_{vs} \left(\widehat{\widehat{\theta}} + \Lambda^* \Delta q_c, \Lambda^* \right) \approx \widehat{\widehat{q}}_v - q_{vs}(\widehat{\widehat{\theta}}, \Lambda^*) + \left. \frac{dq_{vs}}{d\Delta q_c} \right|_{\Delta q_c=0} \Delta q_c \rightarrow$

$$\Delta q_c = \left[\widehat{\widehat{q}}_v - q_{vs}(\widehat{\widehat{\theta}}, \Lambda^*) \right] \left[1 + \left. \frac{dq_{vs}}{d\Delta q_c} \right|_{\Delta q_c=0} \right]^{-1}$$

$$\widehat{\widehat{\theta}}^+ = \widehat{\widehat{\theta}} + \Lambda^* \Delta q_c, \quad \widehat{\widehat{q}}_v^+ = \widehat{\widehat{q}}_v - \Delta q_c$$

$$\Delta^+ q_c = \Delta q_c + \text{EQS}_{(38)} \left(\widehat{\widehat{q}}_v^+, \widehat{\widehat{\theta}}^+ \right)$$

$$\left. \frac{dq_{vs}}{d\Delta q_c} \right|_{\Delta q_c=0} = q_{vs}(\widehat{\widehat{\theta}}, \Lambda^*) \left[1 - e_s(\widehat{\widehat{\theta}}, \Lambda^*)/p^* \right]^{-1} \frac{c_p}{R_v} \left(\frac{\Lambda^*}{\widehat{\widehat{\theta}}} \right)^2$$

$$e_s(\widehat{\widehat{\theta}}, \Lambda^*) = e_s \left(\widehat{\widehat{T}} = \frac{L}{c_p} \frac{\widehat{\widehat{\theta}}}{\Lambda^*} \right), \quad \text{and } p^* = p_0 \left(\frac{c_p}{L} \Lambda^* \right)^{R_a/c_p}$$

conservative FV formulation, positivity of advection, and EU/SL congruence enable consistent semi-implicit integration conserving water substance to machine precision

Flow chart for the whole system:

$$\left\{ \varrho_i^{n+1} = \mathcal{A}_i \left(\varrho^n, (\mathcal{G}\mathbf{v})^{n+1/2}, \mathcal{G}^n, \mathcal{G}^{n+1} \right) \implies \mathbf{V}^{n+1/2} = \overline{(\mathcal{G}\varrho\mathbf{v})}^{n+1/2} \right.$$

$$\left\{ \hat{\mathbf{u}}_i = \mathcal{A}_i \left(\tilde{\mathbf{u}}, \mathbf{V}^{n+1/2}, \varrho^{*n}, \varrho^{*n+1} \right) \right.$$

$$\left\{ \hat{\theta}'_i = \mathcal{A}_i \left(\tilde{\theta}', \mathbf{V}^{n+1/2}, \varrho^{*n}, \varrho^{*n+1} \right) \right.$$

$$\left\{ \begin{array}{ll} \hat{\theta}_i = \mathcal{A}_i \left(\tilde{\theta}, \mathbf{V}^{n+1/2}, \varrho^{*n}, \varrho^{*n+1} \right) & \widehat{R}^{\theta}_i = \mathcal{A}_i \left(\mathcal{R}^{\theta}|^n + \mathcal{H}(q_{\dots})|^n, \mathbf{V}^{n+1/2}, \varrho^{*n}, \varrho^{*n+1} \right), \\ \widehat{q}_{\dots i} = \mathcal{A}_i \left(\tilde{q}_{\dots}, \mathbf{V}^{n+1/2}, \varrho^{*n}, \varrho^{*n+1} \right) & \widehat{R}^{q_{\dots}}_i = \mathcal{A}_i \left(\mathcal{R}^{q_{\dots}}|^n + D(q_{\dots})|^n, \mathbf{V}^{n+1/2}, \varrho^{*n}, \varrho^{*n+1} \right) \end{array} \right. \quad \text{and}$$

$$\mathcal{PCM} \left(\hat{\theta}, \widehat{q}_{\dots}, \widehat{R}^{\theta}, \widehat{R}^{q_{\dots}} \right) \implies \left[\theta, q_{\dots}, \mathcal{R}^{\theta}, \mathcal{R}^{q_{\dots}} \right]^{n+1} \quad \text{and} \quad \mathcal{B}^q := \theta_a \left(\varepsilon q'_v - q_c - q_p \right)$$

$$\left\{ \begin{array}{l} \theta'_i = \hat{\theta}'_i - 0.5\delta t \left(\tilde{\mathbf{G}}^T \mathbf{u} \cdot \nabla \theta_a \right)_i \\ \mathbf{u}_i = \hat{\mathbf{u}}_i - 0.5\delta t \left(\Theta_{\varrho}^* \tilde{\mathbf{G}} \nabla \varphi + \frac{\mathbf{g}}{\theta_a} \left[\theta' + \mathcal{B}^{q, n+1} \right] \right)_i \\ \quad - 0.5\delta t \left(\mathbf{f} \times \left[\mathbf{u} - \frac{\theta^*}{\theta_a} \mathbf{u}_a \right] - \mathcal{M}' \left(\mathbf{u}^*, \mathbf{u}_a, \frac{\theta^*}{\theta_a} \right) \right)_i \end{array} \right.$$

$$\mathbf{L}\mathbf{u} = \hat{\mathbf{u}} - 0.5\delta t \Theta_{\varrho}^* \tilde{\mathbf{G}} \nabla \varphi \rightarrow \mathbf{u} = \check{\mathbf{u}} - \mathbf{C} \nabla \varphi \rightarrow \mathbf{v} = \check{\mathbf{v}} - \tilde{\mathbf{G}}^T \mathbf{C} \nabla \varphi \rightarrow$$

$$0 = - \sum_{\ell=1}^3 \left(\frac{A_{\ell}^*}{\zeta_{\ell}} \nabla \cdot \zeta_{\ell} (\check{\mathbf{v}} - \tilde{\mathbf{G}}^T \mathbf{C} \nabla \varphi) \right) - B^* (\varphi - \hat{\varphi})$$

] J.B. Klemp, W.C. Skamarock, S.-H. Park, Idealized global nonhydrostatic atmospheric test cases on a reduced-radius sphere, *J. Adv. Model. Earth. Syst.* 7 (2015) 1155-1177.

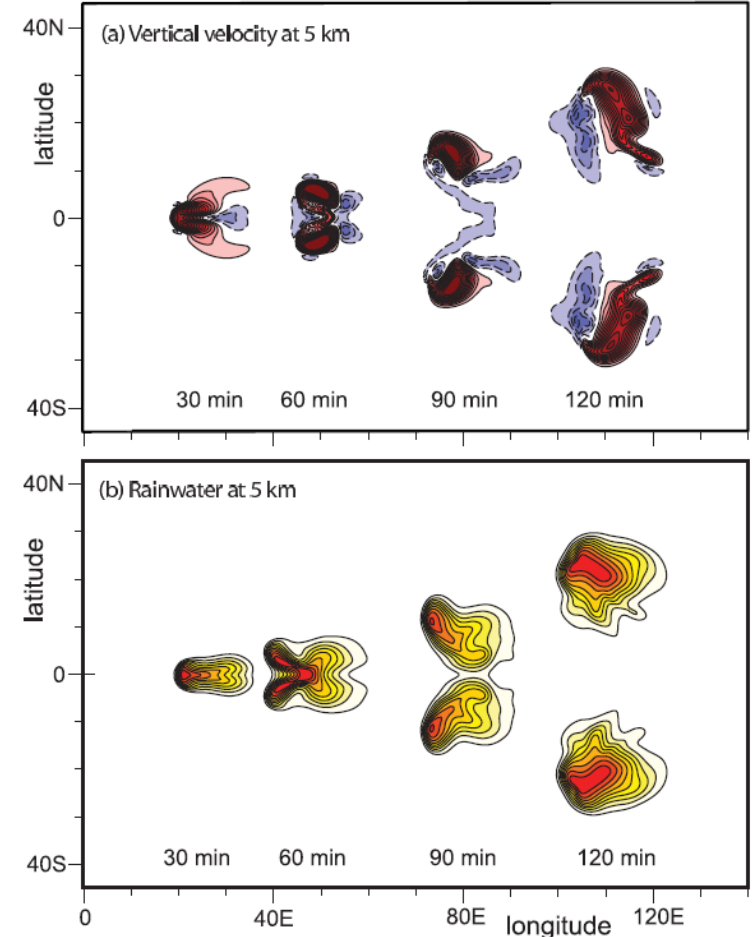
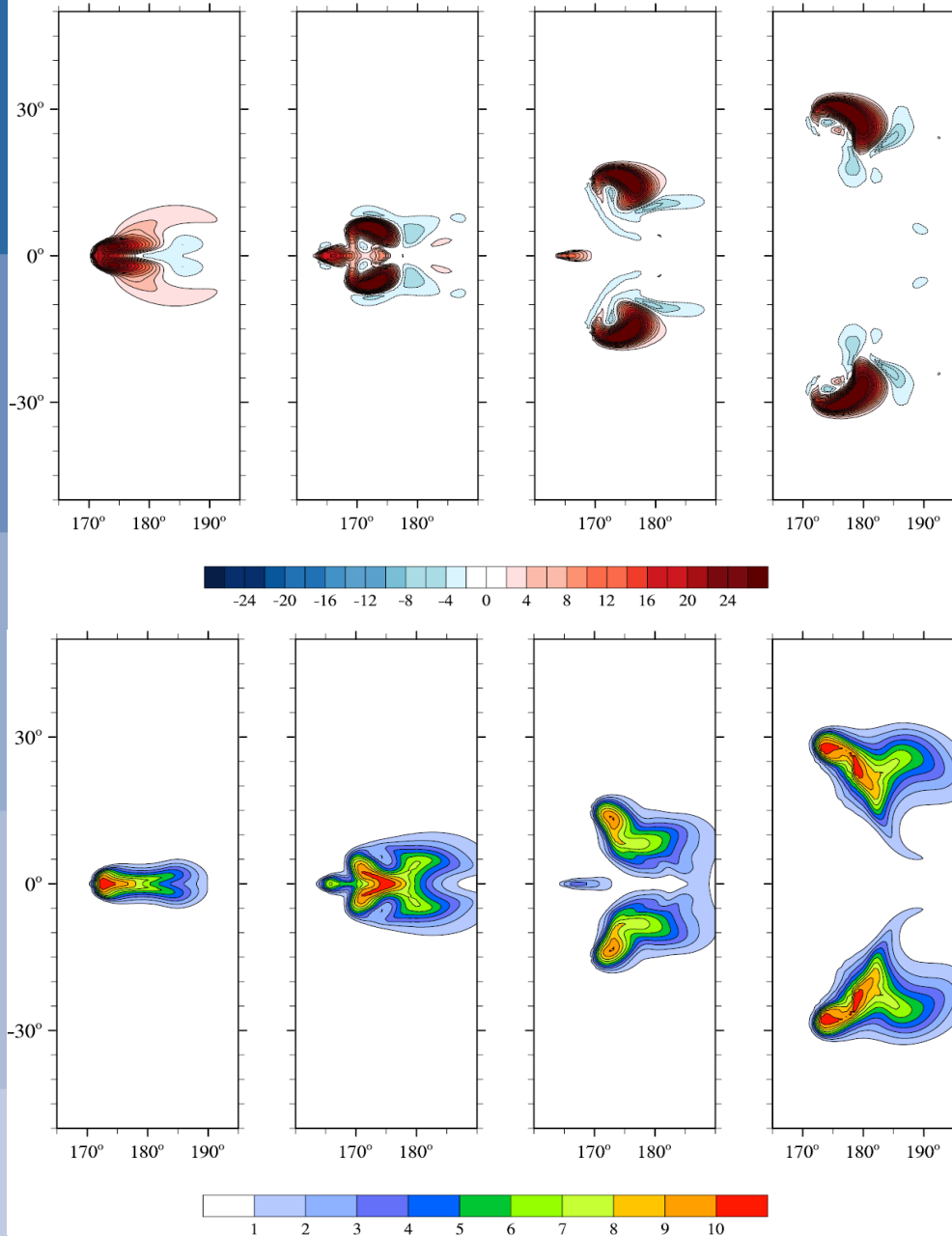


Figure 11. Horizontal cross sections for the simulation with $X = 120$ and $\Delta \sim 500$ m at 5 km at 30 min intervals for (a) vertical velocity ($c.i. = 2 \text{ m s}^{-1}$) and (b) rainwater ($c.i. = 1 \text{ g kg}^{-1}$). Here the longitudinal positions are displayed in the ground-relative framework.

conservative FV formulation + positivity of advection + Eulerian/Lagrangian congruence enable effective integrations of all-scale PDEs of moist-precipitating atmospheric dynamics, while conserving H₂O substance to round-off error

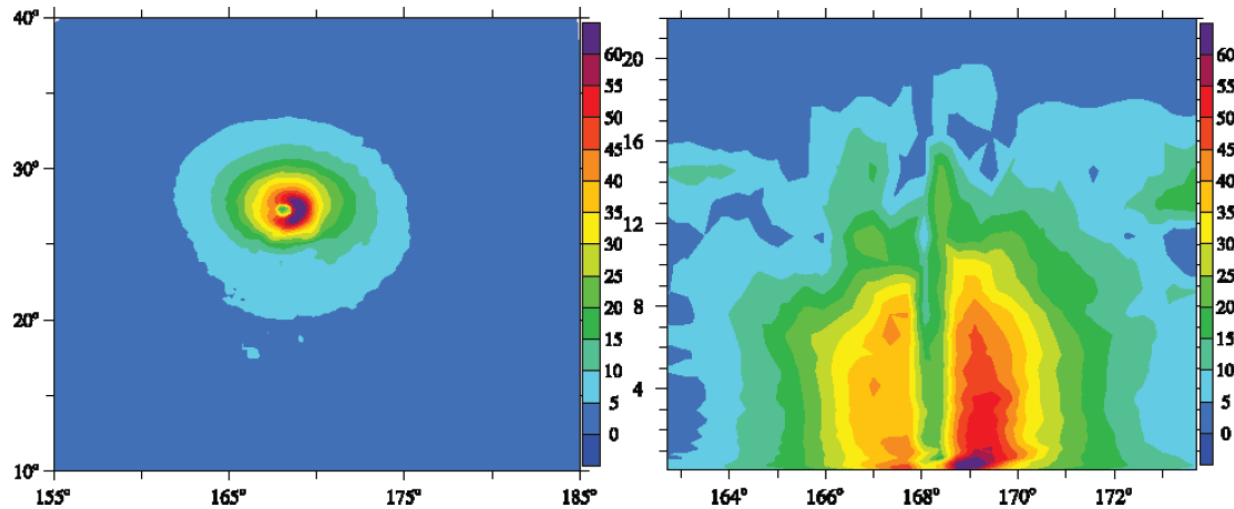


Fig. 3. FVM results for the tropical cyclone experiment of DCMIP (experiment-id: 162) after 10 days of simulation. Horizontal wind magnitude [m/s] in the horizontal (lef) and zonal-height cross sections. Longitude [deg] marks abscissas of both panels, whereas latitude [deg] and altitude [km], marks ordinates of, respectively, right and left panel.

The research leading to these results has received funding from the European Research Council under the European Union's Seventh Framework Programme (FP7/2012/ERC Grant agreement no. 320375)

The modelling infrastructure of the Integrated Forecasting System: Recent advances and future challenges

N.P. Wedi, P. Bauer, W. Deconinck, M. Diamantakis, M. Hamrud, C. Kühnlein, S. Malardel, K. Mogensen, G. Mozdzyński, P.K. Smolarkiewicz

Research Department

November 2015

Special topic paper presented at the 44th session of ECMWF's Scientific Advisory Committee, Reading, UK

This paper has not been published and should be regarded as an Internal Report from ECMWF. Permission to quote from it should be obtained from the ECMWF.



European Centre for Medium-Range Weather Forecasts
Europäisches Zentrum für mittelfristige Wettervorhersage
Centre européen pour les prévisions météorologiques à moyen



A finite-volume module for simulating global all-scale atmospheric flows



Piotr K. Smolarkiewicz^{a,*}, Willem Deconinck^a, Mats Hamrud^a, Christian Kühnlein^a, George Mozdzyński^a, Joanna Szmelter^b, Nils P. Wedi^a

^a European Centre For Medium-Range Weather Forecasts, Reading, RG2 9AX, UK
^b Loughborough University, Leicestershire LE11 3TU, UK

ARTICLE INFO

Article history:
Received 11 August 2015
Received in revised form 7 March 2016
Accepted 8 March 2016
Available online 10 March 2016

Keywords:
Atmospheric models
Hierarchical modelling
Non-oscillatory forward-in-time schemes
Gravity waves
Numerical weather prediction

ABSTRACT

The paper documents the development of a global nonhydrostatic finite-volume module designed to enhance an established spectral-transform based numerical weather prediction (NWP) model. The module adheres to NWP standards, with formulation of the governing equations based on the classical meteorological latitude–longitude spherical framework. In the horizontal, a bespoke unstructured mesh with finite-volumes built about the reduced Gaussian grid of the existing NWP model circumvents the notorious stiffness in the polar regions of the spherical framework. All dependent variables are co-located, accommodating both spectral-transform and grid-point solutions at the same physical locations. In the vertical, a uniform finite-difference discretisation facilitates the solution of intricate elliptic problems in thin spherical shells, while the pliancy of the physical vertical coordinate is delegated to generalised continuous transformations between computational and physical space. The newly developed module assumes the compressible Euler equations as default, but includes reduced soundproof PDEs as an option. Furthermore, it employs semi-implicit forward-in-time integrators of the governing PDE systems, akin to but more general than those used in the NWP model. The module shares the equal regions parallelisation scheme with the NWP model, with multiple layers of parallelism hybridising MPI tasks and OpenMP threads. The efficacy of the developed nonhydrostatic module is illustrated with benchmarks of idealised global weather.

© 2016 Elsevier Inc. All rights reserved.

1. Introduction

Numerical weather prediction (NWP) has achieved high proficiency over the past 30 years. This owes much to advancements in computer hardware, observational networks and data assimilation techniques as well as numerical methods for integrating hydrostatic primitive equations (HPE). One particular numerical approach embraced widely by NWP combines semi-implicit time stepping with semi-Lagrangian advection (SISL) and with spectral-transform spatial discretisation of the governing HPE [46]. The SISL time stepping enables integrations with Courant numbers of the fluid flow and wave motions much larger than unity, whereas the spectral-transform discretisation facilitates the efficient solution of elliptic equations induced by the SISL approach. Moreover, it circumvents the computational expense of the latitude–longitude (lat–lon) co-

* Corresponding author.
E-mail address: smolar@ecmwf.int (P.K. Smolarkiewicz).